

BVUMC *Connection*

OPEN HEARTS. OPEN MINDS. OPEN DOORS.™

Pass It On

“What a wondrous time is spring, when all the trees are budding, the birds begin to sing, the flowers start their blooming; that’s how it is with God’s love, once you’ve experienced it: you want to sing, it’s fresh like spring, you want to pass it on.”

Way last century, as a young person in age and faith, this camp song was foundational to my faith development. The first verse talks about the “spark” that ignites God’s love in us and in those around us. The third verse is a parting wish for everyone to know the Lord of love.

This second verse, though, is the one that inspires this writing. As we continue to long for Spring to come to Milwaukee, don’t we also long for new life in each of our hearts? I pray that this Easter Season may be a “wondrous time” for our community and that the metaphors of budding trees, singing birds and blooming flowers may reflect the ongoing emergence of faith for each of you.

Continued on Page 2...

Contents

- 2 *Pastors’ Columns*
- 3 *Pastors’ Columns & Events*
- 4 *Events*
- 5 *Finances & Events*
- 6 *LSP & Birthdays*
- 7 *Calendar*
- 8 *Contact Info*



Retention vs. Recruitment

This was one of Bishop’s Jung’s points when he met with us. He talked about the need for us as a church to focus more attention on the act of invitation, or recruitment as he put it, rather than on simply maintaining the status quo. I found his example rather timely as I had spoken to this issue a bit in my sermon on the prodigal daughter. I suggested that the church often stands as that unhappy older brother, resenting all the attention being lavished on “those new people”. We forget that without those new people...we would soon cease to exist. Someone once said that the church is always one generation away from extinction. There is great truth in that statement. May it be a reminder to us all that we are called to share not only God’s great love through our actions but to extend that love via real-live, honest-to-goodness invitation! So...who are you going to invite to church?

Blessings,

Pastor Andy

Pass It On...

...Continued from Page 1

It's hard not to notice that recently, our church nursery population is growing! We have been blessed with faithful young families who trust their children to our care and who come regularly to experience the joy of Christian community, worship and service. As we move through April and May I invite you to be praying, with me, about our roll in raising these children in the faith. Will one of you be willing to teach them the camp song "Pass It On"? Will a few of you be willing to organize a summer Vacation Bible School experience for them? Who is willing to engage parents in dialogue and support around the rigors of parenting? How can our youngest children join in acts of service in the days ahead?

Friends, this area of our ministry together is truly blooming! I invite each of you to nourish it with your prayers and fuel its continuing growth with your commitment to offer your time and talent.

Remember the acorns I gave out last fall – the promise of a seed planted – that with time, nutrients and prayer sprouts would come! I believe we are being blessed this Spring with new life as we welcome these young ones among us. I look forward, with great anticipation, to our next step in the visioning process and hope that some of you will bring ideas and energy for this area of ministry. (details TBA)

Thanks be to God for the gift of new life – in the signs and symbols of Spring, in the presence of children and in the glorious resurrection of Jesus in our hearts! Alleluia!

Peace to each of you,

Pastor Kelly

All of Us Know Somebody...

...who struggles with some form of mental illness. Matter of fact, probably every single one of us has wrestled from time to time with bouts of depression. For most of us these are but passing moments but for others it can be a constant companion that makes simply getting through each day extremely difficult. For many years Julie and I have supported the work of NAMI, the National Alliance for the Mentally Ill. One way we've done this is by joining in the annual NAMI Walk. This year we'd love to have you come and join us! Here are the details;

Saturday morning, May 18th, registration begins at 9:00 a.m. and the walk starts at 11:00 a.m. The place is our beautiful lakefront...Veteran's Park on Lincoln Memorial Drive. You can register at <https://securewalks.nami.org>. Julie and I will soon have pledge forms available if you would like to sponsor us but we'd rather have you walk with us! This is also a great family event.

Pastor Andy

**PEP Event:
May Day Flower Delivery &
Movie Night
Friday, April 26**



Beginning at 6pm we will meet to arrange delivery to BVUMC shut-ins & follow it up with a movie. Snacks will be provided. Contact Kay Putney for more information.

New Church Directory

In celebrating the 125th anniversary of Bay View UMC we would like to put together a new directory. We are requesting members make an appointment for one of the following days to get your personal or family photo taken for this directory. There will be no pressure to buy photos or photo packages since we are doing the photo shoot in-house. However, photos will be available to anyone who wants them. Please select a day and time and call the office to make an appointment at (414) 744 - 4036 or contact Pastor Andy or Kitty Schaefer. If you cannot make one of these dates we will try to make arrangements so that you can take part in this historical event.

Saturday, April 13th
12:30pm - 5:00pm

Tuesday, April 16th
4:00pm - 8:00pm

Sunday, April 21st
12:15pm - 4:30pm

Open Your Door to the World

Something extraordinary happens when you share your home and family with a high school student from another country.

That's why 13,000 families worldwide host students through AFS every year. You can help build bridges of intercultural understanding and enrich your life in many ways by sharing your home and daily life with an AFS high school exchange student.

Founded by ambulance drivers after World War II, AFS has led high school student exchange for more than 65 years. Family life, eating meals together, going to the movies, and playing sports makes all the difference for a young visitor studying in the United States.

Families of all kinds are needed to host high school students as well as teachers from around the world. AFS Volunteers support families and students during their stay. Host families provide a bed, meals, and guidance.

There's no place like your home.

Contact Jeannie Schultz, phone 813-0374, email jschultz54@wi.rr.com today to learn more about becoming an AFS Host Family or Volunteer

Recycled Cards Ministry

The Recycled Cards group would like to thank those of you who supported us in 2012. Because of your support, we were able to give to UMCOR, Northcott Neighborhood House, Methodist Children Services, South Shore Regional Interfaith, Camp Lucerne, Open Door Free Clinic, Divine Intervention, Bay View Community Center Food Pantry, and a "thank you" to our church security.

We need your help in many areas of making the cards. Please join us on the 2nd & 4th Wednesday of each month from 12:30pm - 2:30pm for a fun afternoon, or inquire if you could do something at home. Remember to save **all** of your seasonal or holiday cards for us to recycle.

Thank you!

30 Hour Famine 2013

It's that time once again to get ready for 30 Hour Famine! 30 Hour Famine is an annual youth fundraiser to raise money for World Vision. Students and leaders will fast for 30 hours, meeting together to learn more about global hunger and grow in our Christian faith. The event is open to everyone 6th grade and above. This year the event is being coordinated by Diane Balfanz and Rachel Wachtl. Diane and Rachel would really love for you to be there! Juice and water are provided during the fasting, and dinner is provided afterwards. Accommodations can be made for those with special dietary needs.

The fast begins at 12 noon on Friday April 26th and lasts until 6 PM Saturday April 27th. We will meet at Bay View UMC at 5pm on the 26th and partake in games, learning activities, and a community service project. Student pick-up is at 7pm on the 27th. Students will need to bring all over night necessities (ie clothing, pillow, sleeping bag, etc) and as many friends as they would like!

All participants need to contact Diane Balfanz at (414)241-5927 and/or Rachel Wachtl at wachtlre@gmail.com for fundraising materials and registration forms.

Are you receiving a tax refund this year?

"Give to Caesar what belongs to Caesar and to God what belongs to God.." Matthew 22:21

Consider giving a portion or a tithe (10%) to support a ministry you're passionate about! A member of one church called and offered a tithe of his tax refund to fund camp scholarships for children to attend one of our United Methodist camps this summer. Whether your tax refund is less than \$100 or several thousand dollars, a portion of that refund can make a real difference in the lives of those we serve.

The IRA Rollover is a special giving option that is only available through December 31, 2013 to persons 70-1/2 and older. Call your IRA administrator today and request to have your Required Minimum Distribution for 2013 sent directly to your local church or another charity. This gift will benefit the ministry you have designated and will NOT be included in your gross income for tax purposes.

What types of IRAs qualify? Only Traditional and Roth IRAs When? Now through December 31, 2013. Where can I make Qualified Charitable Distributions from my IRA? Only to qualified public charities. All United Methodist Churches and United Methodist Ministries are qualified public charities: UMCOR, any of our Health and Welfare Ministries, UM Camps, or Advance Specials. You may make an outright gift or make a gift that establishes a permanent endowment fund.

For more information and a sample letter please contact us at: Wisconsin United Methodist Foundation 750 Windsor Street, Suite 305, P.O. Box 620 Sun Prairie, WI 53590-0620 1-888-903-9863 or wumf@wumf.org

Your Stewardship Team

Happy Birthday Bay View United Methodist Church!

It is a very special year for us at Bay View United Methodist Church. We kicked it all off with a very special coffee-hour on Sunday, March 3rd, commemorating the grand opening of our building back in 1889. Watch for more opportunities to celebrate this joyous occasion in the near future. Updates will be broadcast in Connection, weekly bulletins, on our new facebook page, and on our website.

From the Finance Team

2013 Giving Record				
Fund	Needed Monthly	Received in March	Needed Yearly	Received so far
General	\$15,770	\$20,064	\$189,240	\$42,713
Building Debt	\$2,421	\$3,881	\$29,052	\$8,536
Apportionment	\$2,222	\$1,704	\$26,664	\$3,148

A Sweet, Sweet Spirit

There's a sweet, sweet spirit at Greensky Hill Indian Mission United Methodist Church in Charlevoix, Mich. While it starts with the maple syrup the men's group makes and sells each year to aid the community, it does not stop there. "Everyone says how friendly we are," a member comments.

The Rev. Timothy Wright remembers when two newcomers walked into a church meeting. Soon they were helping to plan the harvest dinner. Before leaving, they accepted an invitation to volunteer at the meal. Today they are active leaders in the congregation. Founded in the 1830s by Peter Greensky, a Chippewa, today the church is about 50 percent Native American. The autumn harvest dinner, feeding 400 to 600 guests each year, funds scholarships for young people.

Greensky Hill has benefited from the Native American Ministries Sunday offering. "These dollars," says Wright, "keep ministry moving forward."

Native American Ministries Sunday reminds United Methodists of the contributions made by Native Americans to our society. The special offering benefits Native American outreach within annual conferences and across the United States and provides seminary scholarships for Native Americans.

United Methodists relate to Native American Ministries Sunday by learning about and reaching out to Native Americans in their communities and by encouraging Native Americans to consider becoming pastors and nurturing them in their journey. Please give generously on Native American Ministries Sunday April 14

*~Julie Oren
Finance Team Leader*

Co-Ed Softball Anyone?

Faith United is a team composed of members from Faith, Calvary, 1st West Allis and Bay View. We play at 6:30 p.m. on Friday nights at McCarty Park, 84th & Cleveland, beginning May 3rd. We play in a 4-team church league where everyone just wants to have fun. If you're interested in joining us please see Pastor Andy for more information.

Spring Update

LOVING START PRESCHOOL



We've had many visitors the past few weeks:
Easter Bunny: He visited preschool and each student got to find eggs hidden in the Gathering Space (if you find any left-overs, feel free to enjoy a treat).

Dinosaurs: We learned the size different dinos were and measured lengths of string to hang from the climber room to the classroom so we could visualize how BIG the dinosaurs were. We also painted large, wall-sized dinosaurs as group projects.

Prospective families: We hosted an open house for new and returning families for the 2013-2014 school year. If you know of a family with a child who will be 3 by December 31, 2013, please let them know about our program.

~ Miss Martha, Miss Mary, Miss Joan, Miss Dawn

April Birthdays

7th

Linda Becker
Maxine Lelivelt
Janice Liebenstein
Tim Schultz

8th

Ross Jackson

9th

Gerald Knepper

11th

Katy Meyer

12th

William Felber

13th

Rebecca Rehorst

16th

Sarah Hillmert-
Gudelsky

18th

Marilyn Gray
Richard Kumbier

21st

Leo Cigale

23rd

Sydney Haile

25th

Lucy Meyer

27th

John Liebenstein

28th

Linda Kreider

29th

Kevin Meyer

May Birthdays

3rd

Theresa A
Kitzman-Kelley

5th

Laurie Horne

6th

Kay Putney

8th

Linda Schultz

8th

Ross Jackson

10th

Ron Hanstad



Calendar 2013

April/May

KEY:

LSP: Loving Start Preschool
 Outpost: Alternative High School
 SECA: South East Clergy
 SPR: Staff Parish Relations
 Wesleyan: Wesleyan Bells
 WF AA: Women's Freedom AA
 PEP: People Enjoying People
 NA: Narcotics Anonymous

SUNDAY	MONDAY	TUESDAY	WEDNESDAY	THURSDAY	FRIDAY	SATURDAY
7 8:15am Worship 9:15am Sunday School 10:45am Worship 3pm Bread & Jam 7pm AA	8 8:30am Outpost BHS 8:45am LSP 7pm AA 6:30pm Music Ministry	9 8:30am Outpost BHS 8:45am LSP 10am AA 12:15pm LSP 6pm Trustees Mtg 5:30pm AA 7pm Yarn/Quilt Ministry	10 8:30am Outpost BHS 8:45am LSP 10am Bible Study 12:30pm Card Ministry 6pm Last Supper Book Study Reunion	11 8:30am Outpost BHS 8:45am LSP 12:15pm LSP 6pm Praise Band 6:30pm Faith Singers 7pm Keystone AA 7:30pm Wesleyan	12 8:30am Outpost BHS 8:45am LSP 7pm NA Mtg	13 10am Grief Share 10am Baptism 10:30am WF AA 12:30pm Directory Photo Shoot
14 8:15am Worship 9:15am Sunday School 10:45am Worship 7pm AA	15 8:30am Outpost BHS 8:45am LSP 7pm AA 7pm Finance Mtg 7pm District 28 AA	16 8:30am Outpost BHS 8:45am LSP 10am AA 12:15pm LSP 5:30pm AA 4pm Directory Photo Shoot	17 8:30am Outpost BHS 8:45am LSP 10am Bible Study	18 8:30am Outpost BHS 8:45am LSP 12:15pm LSP 6pm Praise Band 6:30pm Faith Singers 7pm Keystone AA 7:30pm Wesleyan	19 8:30am Outpost BHS 8:45am LSP 7pm NA Mtg	20 10am Grief Share 10:30am WF AA
21 8:15am Worship 9:15am Sunday School 10:45am Worship 12:15pm Directory Photo Shoot 1pm Rain Gutter Regata 7pm AA	22 8:45am LSP 6:30pm Embracing a Life of Meaning Reunion 7pm AA	23 8:30am Outpost BHS 8:45am LSP 10am AA 12:15pm LSP 5:30pm AA 7pm Yarn/Quilt Ministry 7:15pm SPR Mtg	24 8:30am Outpost BHS 8:45am LSP 10am Bible Study 12:30pm Card Ministry	25 8:30am Outpost BHS 8:45am LSP 12:15pm LSP 6pm Praise Band 6:30pm Faith Singers 7pm Keystone AA 7:30pm Wesleyan	26 8:30am Outpost BHS 8:45am LSP 6pm PEP May Day Event 7pm NA Mtg	27 10am Grief Share 10:30am WF AA
28 8:15am Worship 9:15am Sunday School 10:45am Worship 3pm Bread & Jam 7pm AA	29 8:45am LSP 7pm AA	30 8:30am Outpost BHS 8:45am LSP 10am AA 12:15pm LSP 5:30pm AA	1 8:30am Outpost BHS 8:45am LSP 10am Bible Study 3pm SECA 5pm LSP Camping	2 8:30am Outpost BHS 8:45am LSP 12:15pm LSP 6pm Praise Band 6:30pm Faith Singers 7pm Keystone AA 7:30pm Wesleyan	3 8:30am Outpost BHS 8:45am LSP 7pm NA Mtg	4 10am Grief Share 10:30am WF AA 1pm Pinewood Derby
5 8:15am Worship 9:15am Sunday School 10:45am Worship 3pm Bread & Jam 7pm AA	6 8:30am Outpost BHS 8:45am LSP 6pm Music Ministry 7pm AA 7pm Bible Study	7 8:30am Outpost BHS 8:45am LSP 10am AA 12:15am LSP 5:30pm AA	8 8:30am Outpost BHS 8:45am LSP 10am Bible Study 12:30pm Card Ministry	9 8:30am Outpost BHS 8:45am LSP 12:15am LSP 6pm Praise Band 6:30pm Faith Singers 7pm Keystone AA 7:30pm Wesleyan	10 8:30am Outpost BHS 8:45am LSP 7pm NA Mtg	11 10am Grief Share 10:30am WF AA

**Reminder:
 Tax Day is
 April 15th**

BAY VIEW United Methodist Church

2772 S Kinnickinnic Ave
Milwaukee, WI 53207

ADDRESS SERVICE REQUESTED

Phone: 414-744-4036
Fax: 414-744-4928
Email: officeadmin@bayviewumc.org

Pastor Kelly Fowler

Phone: 414-378-4012
Email: pastorkelly@bayviewumc.org

Pastor Andy Oren

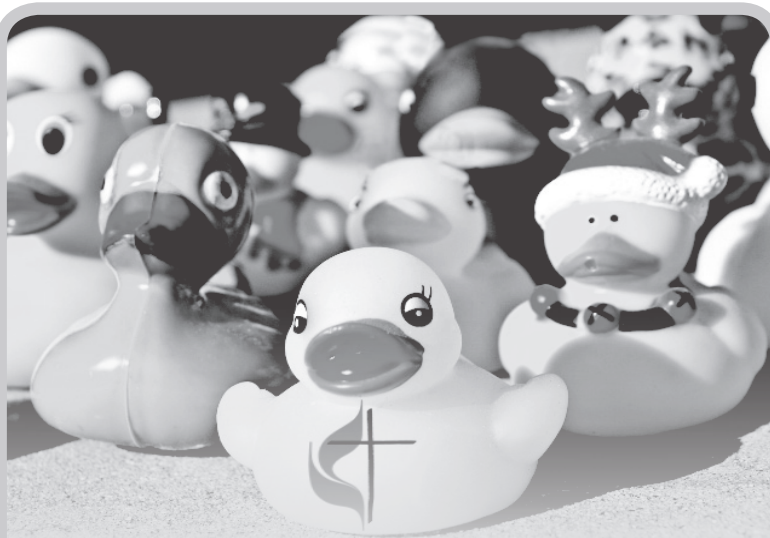
Phone: 414-744-3927
Email: pastorandy@bayviewumc.org

NON-PROFIT
US POSTAGE
PAID
MILWAUKEE, WI
PERMIT NO. 3382

April
2013

We're on the web:
www.bayviewumc.org

C e l e b r a t i n g 1 2 5 Y e a r s



Out of the Heart of our Community
ALL Are Welcome at Bay View
United Methodist Church

2772 S Kinnickinnic Ave
bayviewumc.org
(414) 744 - 4036

SPRING HOURS

8:15am Worship
9:15am Sunday School
& Coffee Hour
10:45am Worship



Please Recycle

OFFICE HOURS:

Monday, Tuesday
Thursday, Friday
8:30am - 2:00pm
Wednesday
8:30am - 1:30pm